

NDIS Transfer Plan for Western Australian participants



Easy English



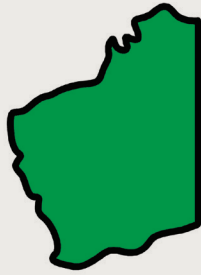
Hard words

This factsheet has some hard words.

The first time we write a hard word

- it is in **blue**
- we write what the hard word means.

In this factsheet **we** means the National Disability Insurance Agency.



There is a disability support scheme in Western Australia called the Western Australian NDIS.

We call this WA NDIS.

WA NDIS is different to the **National Disability Insurance Agency** scheme.



The National Disability Insurance Agency or NDIA manages the **National Disability Insurance Scheme**.

We call this the NDIS.



The NDIS helps people under 65 with a disability get

- care



- supports.

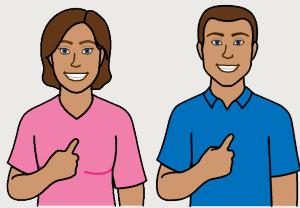


This factsheet is about the National Disability Insurance Scheme **Transfer Plan**.

We will call this the plan.



The plan will say how WA NDIS **participants** will **transfer** to the NDIS.

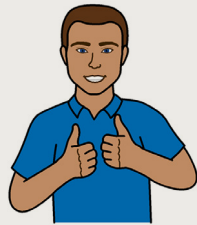


Participants are people who

- get support from WA NDIS
- will get new support from the NDIS.

Transfer means to move.

Participants will transfer to the NDIS from
1 April 2018 to 31 December 2018.



We want to make sure the transfer

- is easy
- is right
- gives people with disability the best outcome.



The transfer will happen at different times in different areas.



April 2018						
S	M	T	W	T	F	S
1	2	3	4	5	6	7
8	9	10	11	12	13	14
15	16	17	18	19	20	21
22	23	24	25	26	27	28
29	30					

June 2018						
S	M	T	W	T	F	S
					1	2
3	4	5	6	7	8	9
10	11	12	13	14	15	16
17	18	19	20	21	22	23
24	25	26	27	28	29	30

North East Metro will transfer from
1 April 2018 to 30 June 2018.



April 2018						
S	M	T	W	T	F	S
1	2	3	4	5	6	7
8	9	10	11	12	13	14
15	16	17	18	19	20	21
22	23	24	25	26	27	28
29	30					

June 2018						
S	M	T	W	T	F	S
					1	2
3	4	5	6	7	8	9
10	11	12	13	14	15	16
17	18	19	20	21	22	23
24	25	26	27	28	29	30

Wheatbelt will transfer from
1 April 2018 to 30 June 2018.



July 2018						
S	M	T	W	T	F	S
1	2	3	4	5	6	7
8	9	10	11	12	13	14
15	16	17	18	19	20	21
22	23	24	25	26	27	28
29	30	31				

November 2018						
S	M	T	W	T	F	S
					1	2
3	4	5	6	7	8	9
10	11	12	13	14	15	16
17	18	19	20	21	22	23
24	25	26	27	28	29	30

South Metro will transfer from
1 July 2018 to 30 November 2018.



August 2018						
S	M	T	W	T	F	S
			1	2	3	4
5	6	7	8	9	10	11
12	13	14	15	16	17	18
19	20	21	22	23	24	25
26	27	28	29			

October 2018						
S	M	T	W	T	F	S
	1	2	3	4	5	6
7	8	9	10	11	12	13
14	15	16	17	18	19	20
21	22	23	24	25	26	27
28	29	30	31			

Central South will transfer from
1 August 2018 to 31 October 2018.



September 2018						
S	M	T	W	T	F	S
30						1
2	3	4	5	6	7	8
9	10	11	12	13	14	15
16	17	18	19	20	21	22
23	24	25	26	27	28	29

December 2018						
S	M	T	W	T	F	S
30	31					1
2	3	4	5	6	7	8
9	10	11	12	13	14	15
16	17	18	19	20	21	22
23	24	25	26	27	28	29

Lower South West will transfer from
1 September 2018 to 31 December 2018.



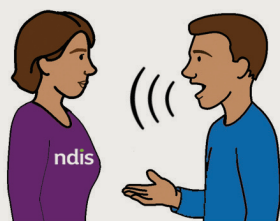
October 2018						
S	M	T	W	T	F	S
	1	2	3	4	5	6
7	8	9	10	11	12	13
14	15	16	17	18	19	20
21	22	23	24	25	26	27
28	29	30	31			

December 2018						
S	M	T	W	T	F	S
30	31					1
2	3	4	5	6	7	8
9	10	11	12	13	14	15
16	17	18	19	20	21	22
23	24	25	26	27	28	29

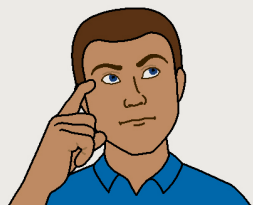
Kimberley-Pilbara will transfer from
1 October 2018 to 31 December 2018.

We **estimate** that we will transfer up to
8711 participants.

Estimate means to guess.



There are **committees** to make sure that the transfer works well.



Committees are groups of people. They talk to the NDIA about

- what they think



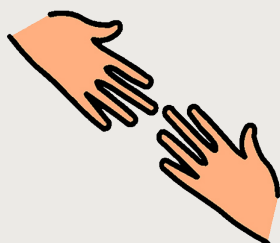
- what works well



- what does not work well.

The committees will

- find problems that might happen



- fix problems quickly.



More information



Go to our website www.ndis.gov.au



Call 1800 800 110 weekdays 8am to 11pm

Call 131 450

for information in a different language



Speak and listen users

1800 555 727 then ask for 1800 800 110



TTY users

1800 555 677 then ask for 1800 800 110

© Scope (Aust) Ltd. You may use this document for your own personal, non-commercial purposes only. You must not use the document for any other purpose, and must not copy, reproduce, digitise, communicate, adapt, or modify the document or any part of it (or authorise any other person to do so) without the prior consent of Scope (Aust) Ltd.

Scope's Communication and Inclusion Resource Centre

wrote the Easy English in May 2018 www.scopeaust.org.au.

To see the original contact The National Disability Insurance Agency.

The Picture Communication Symbols © 1981-2010 by Tobii Dynavox.

All Rights Reserved Worldwide. Used with permission.

ClipArt © Inspired Services, UK. www.inspiredservices.org.uk

Change picture © 2011. www.changepeople.co.uk