

ndis

NDIS bawmhnaak tangka na hman khawhnaak airolhnaak bawmhnaak pawl

Hakha Chin | Laiholh



Fawi tein
relmi



Mah cahren he bawmhnak

Nangmah nih minung pakhat khat kha an
bawmtu ding ah na lak khawh hna:



- mah cahren fiannak
- konglam tam deuh kawlnak.



Pehtlaihnaq konglam cu mah cahren donghnaq
ah a um.

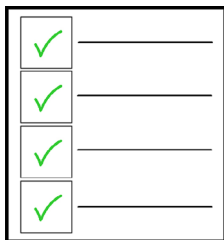
Mah cahren konglam

Rampi Michambau Aamahkhaan Riantuantu Bu (National Disability Insurance Agency, NDIA) nih mah cahren hi a tial.



Kanmah nih kanmah timi biafang kan hman tik ah, chim duhmi cu NDIA kha a si.

Kanmah nih Rampi Michambau Aamahkhaan Riantuantu Bu (National Disability Insurance Agency, NDIA) silole NDIS kha kan tuan.



Mah cahren hi NDIS tangka bawmhnak cung ah na hman khawhmi airolnak bawmhnak pawl kong a si.

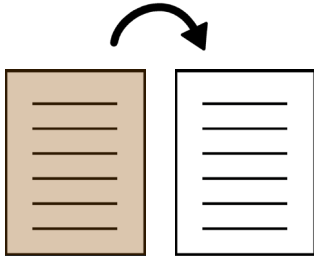
Airolnak bawmhnak pawl cu:



- nangmah nih NDIS tangka na hmang **kho lo** kan timi
- a cheukhat thil pawl chungah na hman khawhmi kha chim duhmi a si.

Kanmah nih kan lungtlin a si ahcun airohlnak bawmhna ngah ding in onh na si **kho**.

Airohlnak bawmhna cu atlangpi bantuk a si hrim awk a si:



- na suaisamnak chung i bawmhna airohmi a si hrimhrim lai
- na suaisamnak chung bawmhna ah aa khat silole a tlawm deuhmi a si lai
- na suaisamnak chung bawmhna he na caah aa khatmi silole a tha deuhmi a si hrimhrim lai.



NDIS bawmhnak tangka hman ding ah onh na si khawhmi bawmhnak pawl

Inn chung thilri chawhlehnak lei ning in ngah khawhmi pawl

Mah nih a chim duhmi cu a tanglei pawl bawmh ding ah fehtermi inn pawl caah thilri pawl:



- chambaunak herhnak pawl he
- mah tein na thutdirnak.

Cheukhat minung pawl nih NDIS bawmhnak tangka cu bawmchantu seh thilri caah an hman khawh men.



Bawmchantu seh thilri a sullam cu chambaunak a ngeimi minung pawl bawmh ding ah thil pawl kha chim duhmi a si.

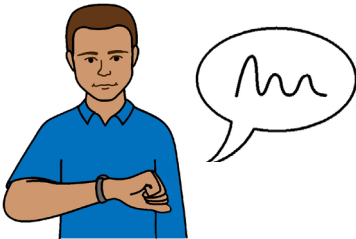
Smart watch pawl



Smart watch timi cu:

- internet he aa pehtlaimi thil pakhat khat
- na baan ah naa khihmi kha a si.

Nangmah cu smart watch cung ah NDIS
bawmhnaak tangka hman ding in onh na si **kho**:



- mah nih pehtlaihnak an bawmh a si ahcun
- nangmah caah pehtlaihnak caah a tha bik
lam a si ahcun.

Tablet pawl

Tablet timi thilri cu:



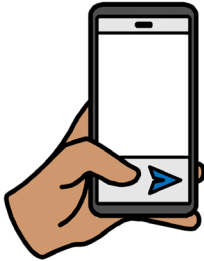
- internet he aa pehtlaimi thil pakhat khat
- nangmah nih naa put khawhmi kha a si.

Nangmah cu a tang lei bantuk na si ahcun
NDIS bawmhnak tangka hman ding ah onh na
si **kho**:



- mah nih pehtlaihna an bawmh a si ahcun
- nangmah caah pehtlaihna caah a tha bik
lam a si ahcun.

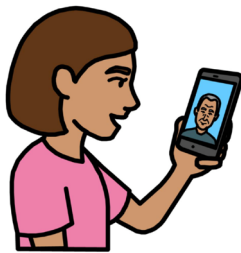
Smart phones



Smart phone timi cu:

- internet he aa pehtlaimi thil pakhat khat
- nangmah nih naa put khawhmi kha a si.

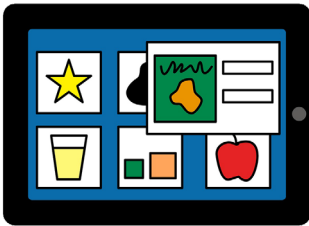
Nangmah cu smart watch cung ah NDIS
bawmhnak tangka hman ding in onh na si **kho**:



- mah nih pehtlaihnak an bawmh a si ahcun
- nangmah caah pehtlaihnak caah a tha bik
lam a si ahcun.

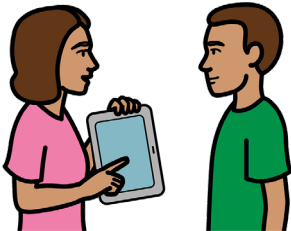
Luhkhawhnak le pehtlaihna hmuithna pawl caah app pawl

Luhkhawhnak le pehtlaihna hmuithna pawl caah app pawl cu a tanglei bantu program pawl an si:



- tablet tibantu thil pakhat khat ah na chihmi
- nangmah pehtlaihna ah an bawmni.

Nangmah cu a tanglei bantu na si ahcun NDIS bawmna tangka hman ding ah onh na si **kho**:



- mah thil nih hawi he pehtlaihna an bawm ahcun
- nangmah caah pehtlaihna a tha bikmi lam pakhat a si ahcun.

Mah cahren konglam thawngpang tam deuh

Mah cahren konglam thawngpang tam deuh caah, zaangfahnak te'n ra kan pehtlai.



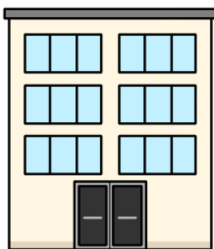
Na kan chawnh khawh

1800 800 110



Nangmah nih email na kan kuat khawh

enquiries@ndis.gov.au



Pumpak in kan zung tampi lak i pakhat zong ah na kan leng kho

NDIS website ah na ram chung zung na kawl khawh. [ndis.gov.au/contact/locations](https://www.ndis.gov.au/contact/locations)

NDIA konglam tam deuh in zoh



Kan website ah leng

ndis.gov.au

**Kan social channel pawl ah follow
kan tuah**



[Facebook](#), [Twitter](#), [Instagram](#),
[YouTube](#), [LinkedIn](#)

Kanmah na kan pehtlaih ding ah bawmhnak la

Mirangholh ah bawmhnak a herhmi minung pawl caah



Nangmah nih Calehnak le Holhlehnak lei Riantuanpiaknak Translating and Interpreting Service, TIS) na chawnh khawh.

131 450

Hnachet asilole khuatheih aa harhmi minung pawl caah



National Relay Service na hman khawh.

relayservice.gov.au



Nangmah nih telephone mode (TTY) in ca kuat na hman khawh.

1800 555 677



Aw na hman khawh.

1800 555 727

Mah Fawi Tein Relmi cahren hi Scope (Aust) Ltd. nih November 2024 chung ah Picture Communication Symbols (PCS) hmang in sermi a si. PCS cu Tobii Dynavox, LLC ii trademark pakhat a si. NawIngeihnak vialte ngeih peng a si. Onhnak he hman a si. Mah cahren hi a leng lei minung sin ah zuar a si hrimhrim lai lo. Hmanthlak pawl cu nawlpeknek tello in hman than an si hrimhrim lai lo. Hmanthlak pawl kong tam deuh theihnak ding caah, Scope kha 1300 472 673 ah pehtlai silole scopeaust.org.au ah kal