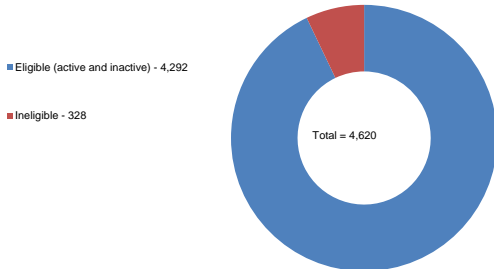


Key points

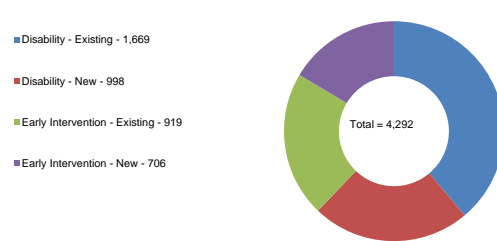
- There are 4,292 participants of which 3,429 have an approved plan in the ACT trial site.
- The amount of committed support as at 31 March 2016 for this group is \$208.5m.

People

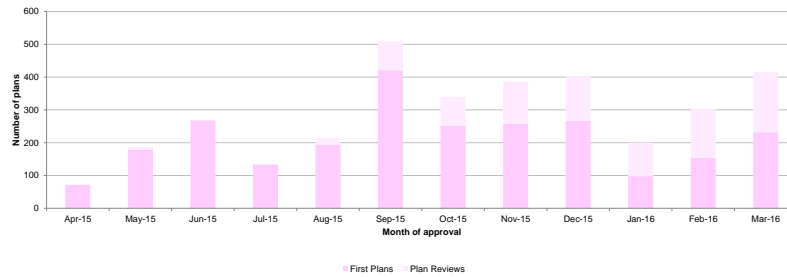
People by current eligibility status



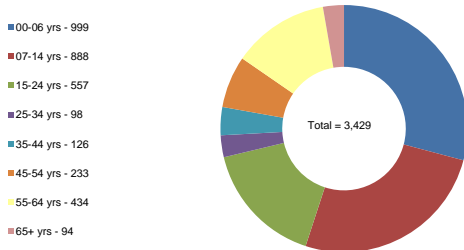
Eligible participants by access type



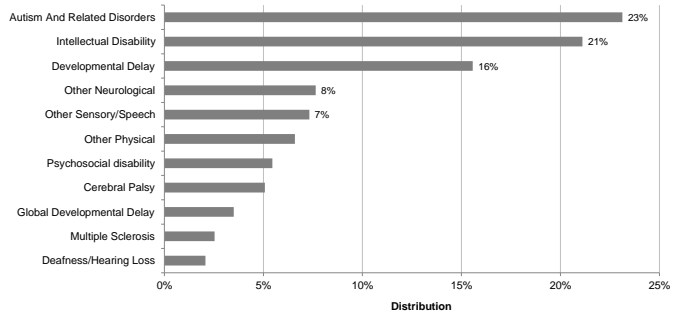
Approved plans by month



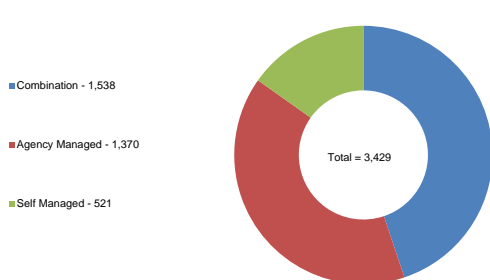
Approved plans for participants by age group



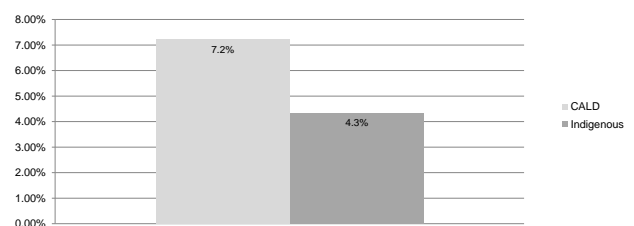
Approved plans for participants by primary disability (%)



Approved plans for participants by management type

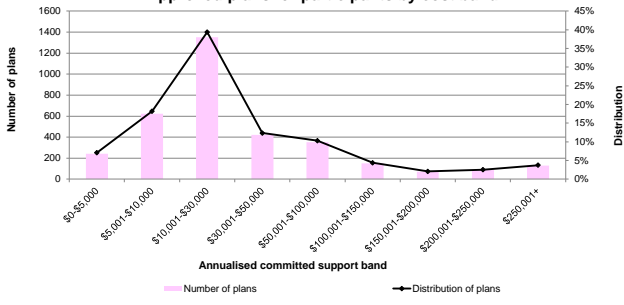


Proportion of participants with an approved plan

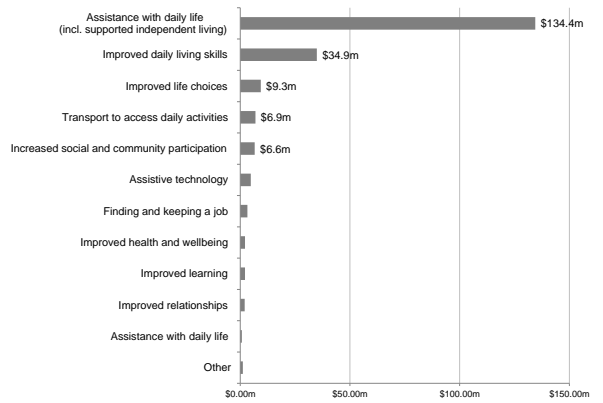


Funded supports

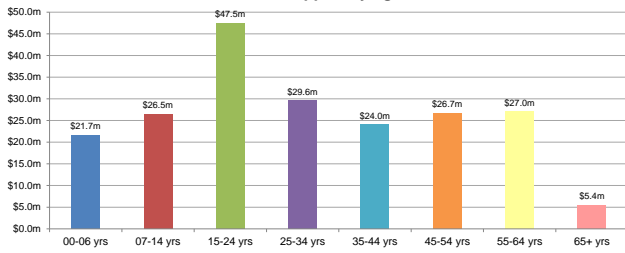
Approved plans for participants by cost band



Approved funded support by category



Committed support by age band



Average annualised plan statistics

25th Percentile = \$9,980
Median = \$18,749
75th Percentile = \$45,432
Mean = \$46,975